

Winkelprofil Nr. 160, 24,5 x 10 mm

- Aluminium.
- Selbstklebend.

TÜV Zertifikat-Nr. 44 780 14206214

| | |
|----------------------|-----------------------------------|
| Werkstoff: | EN AW 6063 (DIN EN 573) |
| Werkstoffzustand: | T6 (DIN EN 755-2) |
| Vorbehandlung: | E6 (DIN EN 17 611) |
| Schichtdicke Eloxal: | Klasse 15 (DIN EN 17 611) |
| Pulverbeschichtung: | optional (RAL/Metallic/Holzdekor) |

Klebstoff

| | |
|--|--------------------------------|
| Schmelzhaftklebstoff (synthetische Kautschukbasis) | |
| Viskosität: | 10.000 +/- 3.000 mPa.s (170°C) |
| (Brookfield RVT DV-II, Sp 27 ASTM D 3236) | |
| FDA Status: | gemäß § 175.105 Adhesives |
| Transportschutz: | abgedeckt mit Silikonpapier |

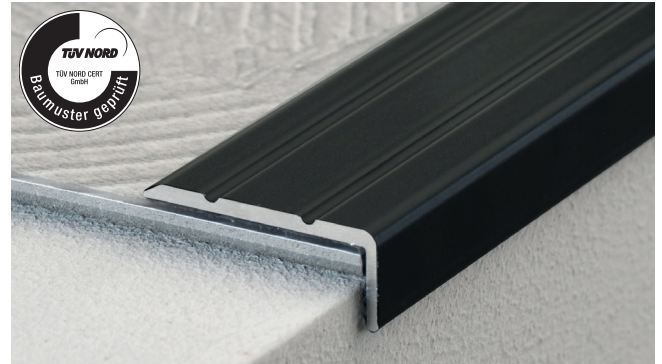
Geeignet für: Designbelag / LVT Click und Loose Lay, Designbelag / LVT Dryback, Laminat / Multilayer

Montageart: Kleben

Längen: 300, 270, 100, 90 cm

Farben: gold, sahara, silber, bronze, Edelstahl matt, Edelstahl gebürstet, schwarz pulverbeschichtet (RAL 9005), anthrazit metallic, grau metallic, bronze metallic, Buche, Eiche dunkel, Eiche hell, Ahorn, Nussbaum, Eiche hellgrau, Eiche grau

Winkelprofile sind ideal geeignet als kleiner Treppenwinkel, als Türschwellenprofil oder als Abschluss an Podesten. Sie schützen die Kanten des Bodenbelags dauerhaft.



Angle edge no. 160, 24.5 x 10 mm

- Aluminium.
- Auto-adhesive.

TÜV certification no. 44 780 14206214

| | |
|------------------------------|-----------------------------------|
| Material: | EN AW 6063 (DIN EN 573) |
| Material condition: | T6 (DIN EN 755-2) |
| Pre-treatment: | E6 (DIN EN 17 611) |
| Thickness of anodised layer: | Class 15 (DIN EN 17 611) |
| Powdercoating: | optional (RAL/metallic/woodstyle) |

Adhesive

| | |
|---|--------------------------------|
| hotmelt adhesive (synthetic rubber-based) | |
| Viscosity: | 10.000 +/- 3.000 mPa.s (170°C) |
| (Brookfield RVT DV-II, Sp 27 ASTM D 3236) | |
| FDA state: | acc. to § 175.105 Adhesives |
| Protection: | covered with silicone paper |

Suitable for: Design flooring / LVT click and loose lay, Design flooring / LVT dryback, Laminate / multilayer

Installation: gluing

Lengths: 300, 270, 100, 90 cm

Colours: gold, sahara, silver, bronze, stainless steel matt, stainless steel brushed, black powdercoated (RAL 9005), anthracite metallic, grey metallic, bronze metallic, beech, oak dark, oak light, maple, walnut, Oak light grey, Oak grey

Angle edges are ideally suited as a small staircase angle, as a door threshold profile or as a termination on platforms. They protect the edges of the flooring permanently.